



DIGITIZING SPACES

2020 [V1]

02

ABOUT US

03

INTERACTIVE SMARTBOARD



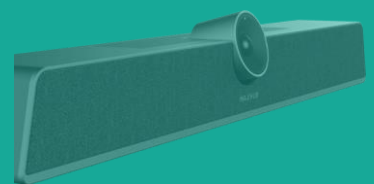
07

INTEGRATED LED DISPLAY



11

UC BAR



14

EDUCATION
SMARTBOARD



17

DOOR ACCESS
SYSTEM



20

ACCESSORIES

INTECH DESIGN

InTech Design is a Singapore based company specializing in technological hardware and software developments.

We are focused on improving the user experience quality and place high emphasis on our products, with the goal to empower and maximize work efficiency for our clients. InTech is also committed in providing our valued clients with impeccable services, becoming their one stop solution for all visualization and technological matters.



MAXHUB

Interactive Smartboard

An innovative design that combines writing, presentation & collaboration functions all in one. Breaking through the barriers of conventional meeting styles, MAXHUB is here to maximize your work efficiency.

YOUR TRUSTED BRAND

- Wholly owned subsidiary of CVTE (stock code: 002841), a world-renowned solution provider of LCD driver products.
- With multi-million dollar EMC laboratory running several tests on all products before launching to ensure the highest quality.
- 170 of China's top 500 enterprises such as Tencent, Sougou, CGB and China Southern Airlines are using MAXHUB.

See how **MAXHUB** can make a difference to your office!



Too many accessories and cable connections between devices makes the meeting room messy. It also poses potential safety hazards to users of the space.



MAXHUB Interactive Smartboard gives your meeting room a fresher and neater look. It also maximizes your meeting and work efficiency.

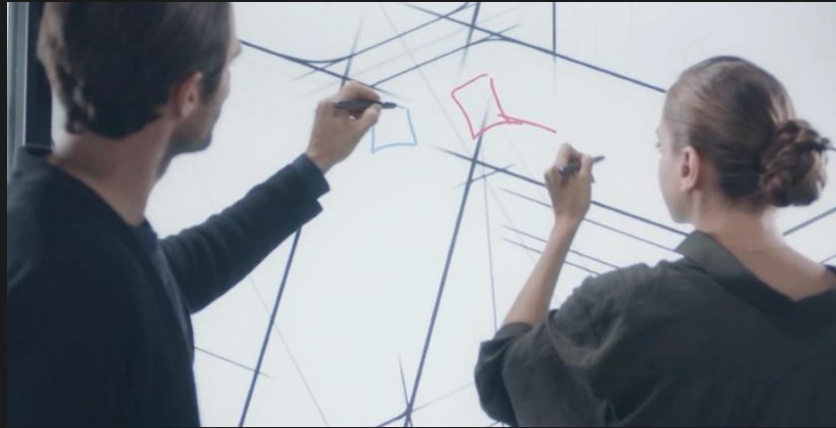
ONE STOP SOLUTION

- No more fussy cables laying around as **MAXHUB Interactive Smartboard** combines all your meeting room gadgets into a single device
- Panels are available in various sizes (suitable for use be it small meeting rooms or large conference halls)



WRITING

- With 3 in-built whiteboards that allows free annotations at any interface
- 1mm writing accuracy with graphic intelligent recognition and smart chart insertion
- Supports dual-pen and dual-colour writing* with smart gesture control that makes your work easier
- Up to 20 touch points and create up to 20 pages (unlimited work-screen size)



COLLABORATION

- Supports up to 4 devices (PC, tablets or mobile) casting screens simultaneously
- Connections made easy via wireless transmission or through MAXHUB dongle (no more cables needed)
- Compatible with most conferencing applications (e.g. Zoom, Microsoft Teams, Polycom etc.)
- With in-built 8- or 12-megapixels cameras, 6 built-in array microphones, 8m distant sound pick-up, 2.1 channel stereo and real human voice restored by intelligent EQ, MAXHUB brings you the most impressive conferencing quality.



PRESENTATION

- Supports free annotations on every single PowerPoint slide
- Hassle-free saving and sharing of PowerPoint and/or documents via email or QR codes that can be automatically generated
- With transmission time of 0.09s and real time writing, MAXHUB brings you a seamless presentation and sharing experience.
- With 4K HD / UHD screens, MAXHUB ensures that the presentation of HD images and videos are not compromised



*Dual-colour writing is available on the X3 Standard series only.

SPECIFICATIONS

Model



MAXHUB X3 STANDARD SERIES



MAXHUB X3 ULTIMATE SERIES

Size (inch)	55 / 65 / 75 / 86 / 98	65 / 86
Display	4K HD	4K UHD
Touch System	Infrared Technology	P-CAP + EMR Technology
Screen	Anti-Glare Toughened Glass	Anti-Glare Tempered Glass
Camera	1 x 8 megapixels	3 x 12 megapixels
Array Microphone	Omni-directional 6-array microphones 8m voice pick-up	Omni-directional 6-array microphones 8m voice pick-up
Speakers	3 acoustic speaker chambers 2 x 15 watt and 1 x 10 watt Stereo surround sound	3 acoustic speaker chambers 2 x 15 watt and 1 x 10 watt Stereo surround sound
Operating System	Android 7.0 + Microsoft Windows 10	Android 7.0 + Microsoft Windows 10

*All data are collected from the MAXHUB Lab

MAXHUB

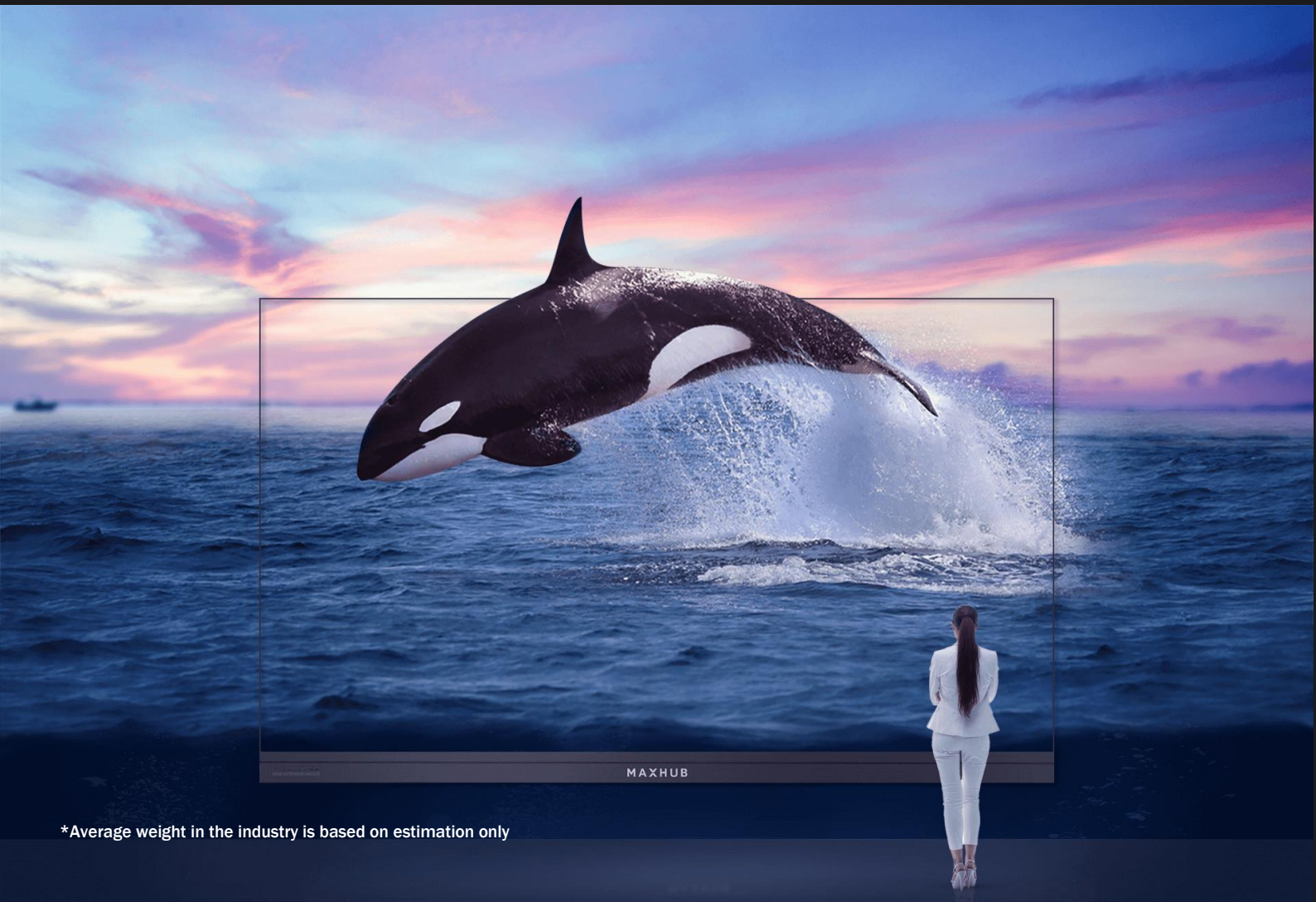
Integrated LED Display

Designed for Large Screen Display

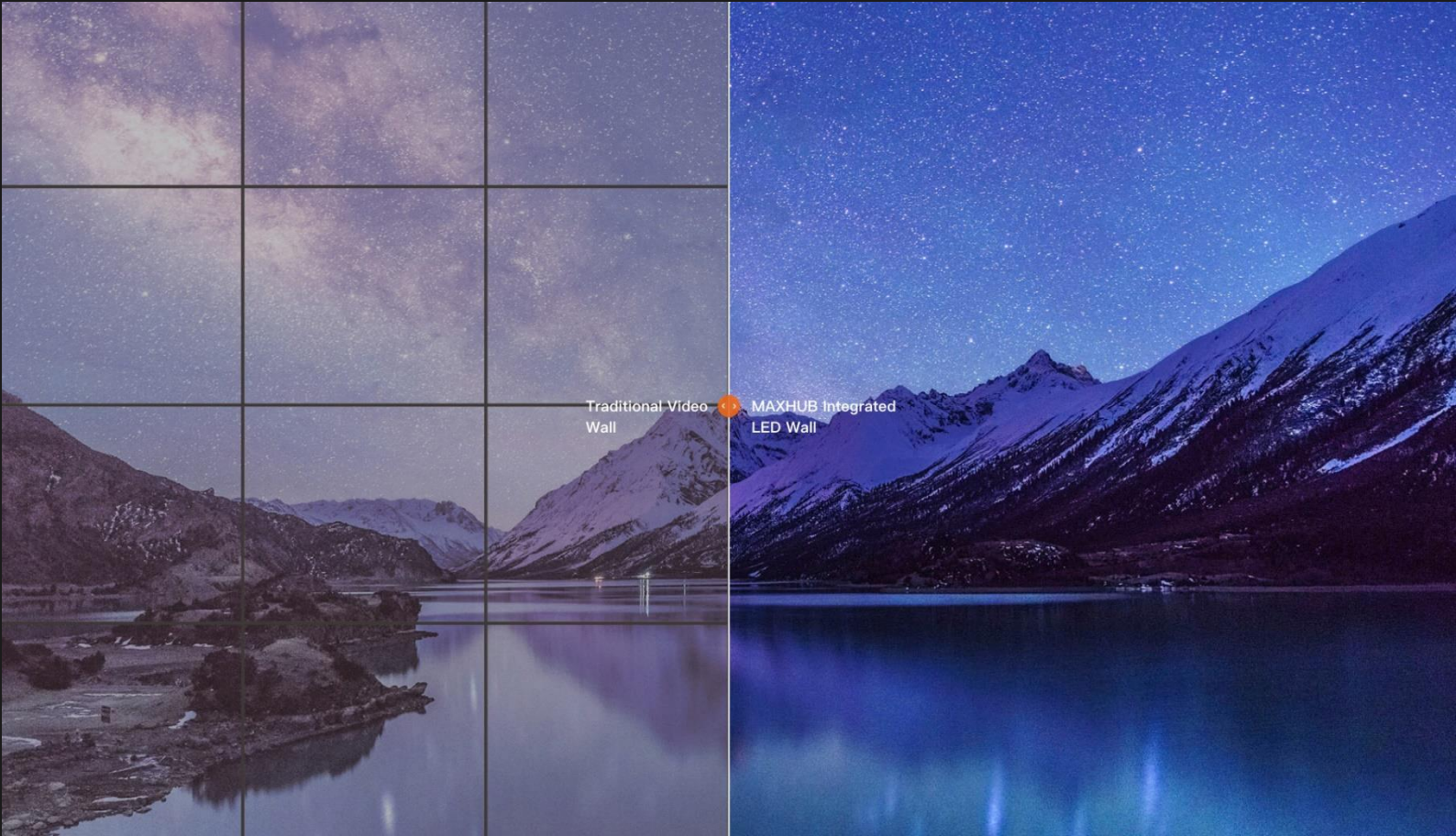
Available in various sizes ranging from 110" to 220", the MAXHUB Integrated LED Panel is created for large screen display and presentation. With clear and sharp display of static and motion graphics, be impressed by the immersive and exquisite visual experience.

Ultra-Thin, Ultra-Light

Down to 4.8kg per cabinet, around 30% lighter than average weight* in the industry
Panel thickness reduced to only 28.5mm

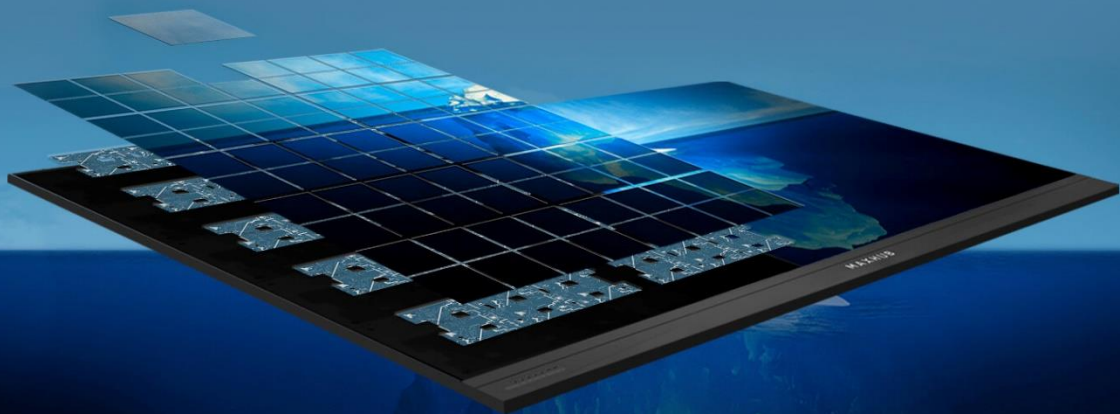


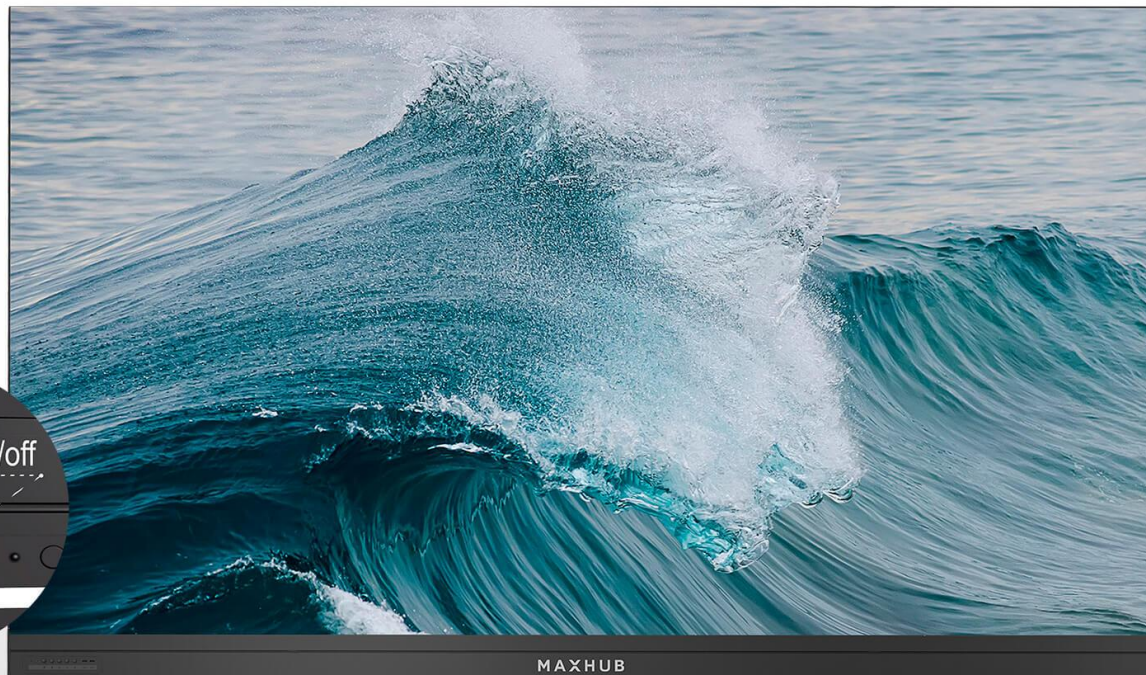
*Average weight in the industry is based on estimation only



SPECTACULAR DISPLAY FOR AN IMMERSIVE VISUAL EXPERIENCE

- 1080P Full HD Resolution
- Optimized grayscale display even in low brightness
- “Dual-screen”, “Full-screen” and “Central” modes available on the MAXHUB Ultra-wide Integrated LED Panel, offering more visual options for large scale presentations.





Delivering Simplicity & Efficiency

- Integrated 3-in-1 panel (no other external devices required) with built-in Android system that supports smart features.
- Plug & play system with only one button to turn on/off. Comes with remote and smart control to access settings.
- Real-time wireless screen-sharing with up to 4 devices (including PCs, iOS and Android devices).
- Annotate from multiple devices with synchronized writing, allowing everyone to start sharing ideas easily.



SPECIFICATIONS

Model	LM110N07	LM110N03	LM138N07	LM138N06
Size (Inch)	110	110	138	138
Pixel Pitch (mm)	1.2	1.9	1.5	1.9
Brightness (nit)	100-550	100-550	100-550	100-550
Refresh Rate	1920 - 3840	1920 - 3840	1920 - 3840	1920 - 3840
Resolution	1920 x 1080	1280 x 720	1920 x 1080	1600 x 900
Power Consumption (MAX/Ave) (W/Display)	2080 / 800	1280 / 500	3000 / 1200	2000 / 800
Viewing Angle (H/V)	160°/140°	160°/140°	160°/140°	160°/140°
Overall Dimension (mm)	2453 x 1502 x 38.5*	2453 x 1502 x 38.5*	3063 x 1845 x 38.5*	3063 x 1845 x 38.5*
Overall Dimension (inch)	96.57 x 59.13 x 1.52*	96.57 x 59.13 x 1.52*	120.59 x 72.64 x 1.52*	120.59 x 72.64 x 1.52*
Weight (kg/lb)	115 / 253.53	115 / 253.53	175 / 385.8	175 / 385.8

Model	LM165N07	LM220N07	LM120M07	LM150M07
Size (Inch)	165	220	120	150
Pixel Pitch (mm)	1.9	2.5	1.3	1.7
Brightness (nit)	100-600	100-600	100-550	100-550
Refresh Rate	1920 - 3840	1920 - 3840	1920 - 3840	1920 - 3840
Resolution	1920 x 1080	1920 x 1080	1920 x 1080	1920 x 1080
Power Consumption (MAX/Ave) (W/Display)	2880 / 1150	5120 / 2000	2080 / 800	3000 / 1200
Viewing Angle (H/V)	160°/140°	160°/140°	160°/140°	160°/140°
Overall Dimension (mm)	3673 x 2188 x 38.5*	4893 x 2874 x 38.5*	2678 x 1630 x 28.5*	3344 x 2004 x 28.5*
Overall Dimension (inch)	144.61 x 86.14 x 1.52*	192.63 x 113.15 x 1.52*	105.43 x 64.17 x 1.12*	131.65 x 78.90 x 1.1*
Weight (kg/lb)	245 / 540.13	425 / 936.96	95 / 209.44	143 / 315.26

Model	LM180M07
Size (Inch)	180
Pixel Pitch (mm)	2.0
Brightness (nit)	100-550
Refresh Rate	1920 - 3840
Resolution	1920 x 1080
Power Consumption (MAX/Ave) (W/Display)	2880 / 1150
Viewing Angle (H/V)	160°/140°
Overall Dimension (mm)	4010 x 2379 x 28.5*
Overall Dimension (inch)	157.87 x 93.66 x 1.12*
Weight (kg/lb)	200 / 440.92

*All data are collected from the MAXHUB Lab

MAXHUB UC S10

Unified Communication Bar



Integrated Video Conferencing Terminal

A communication terminal that allows easy sharing of ideas, images and data, and keeps the meeting flowing smoothly.





Studio-Quality Sound

6-element Microphones | 8W Speakerphone

Auto Noise Reduction and Echo Cancellation | 8m Voice Pick-up

Visionary Camera

Auto-framing with Intelligent Face Recognition | 3 Camera Position

120° FOV Full Room Coverage | 12MP | 5x Digital Zoom

Effortless Collaboration

One-click Wireless Screen-sharing | Share up to 4 Devices Simultaneously

Parallel Wi-Fi Networking with Dual Wi-Fi Module Design



- **5-in-1 compact design**

Next-generation camera, speakerphone, microphone, screen-share and Android are built in.

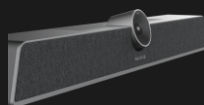
- **Flexible installation**

Designed for table stand, TV or wall mounting without the need for special construction.

- **1-minute simple setup**

With built-in Android, there's no computer needed. Simply start a teleconference with the app you prefer, either from a computer or from the UC S10. Connect it to the display, and you're ready to go.

SPECIFICATIONS



Model

MAXHUB UC S10

Size (mm)	465 x 91 x 57
Net weight (g)	1300
Camera	12 megapixels, 1/2.3 inch CMOS
Filed of View (DFOV)	120°
Focal Length/Frame Rate	Fixed/4K@30fps
Minimal Focusing Illumination	0.05 Lux (@f/2.4, AGC On)
White Balance	Auto
Backlight Compensation	Yes
Tilt Range	Up 15°, Down 15°
Camera Mount	Magnet + M12
Camera Features	EPTZ, Auto-framing
Speaker Max. Sound Pressure Level	86dB SPL@1m, 1kHz
Frequency Range (-10dB)	150Hz ~ 15kHz
Total Harmonic Distortion	≤5%
Signal to Noise Ratio	≥75dB
Speaker Output Power	1 x 8W
Microphone	6 x MEMS
Pick-up Range/Angle (m/°)	8 / 180° front
Frequency Response	100Hz ~ 7.5kHz
Microphone Features	Noise Reduction, Echo Cancellation
Input Voltage	12V
Power Consumption (Typ.)	36W
Current Consumption	3A
Processor	2xA73 + 2xA53
Memory	4GB
Storage	16GB
Audio DSP	ARM 4 x A35
Operating System	Android 8.0
System Feature	Wireless Screen-share
LINE IN/OUT	1 x 3.5mm earphone port
HDMI	1 x HDMI1.4
Internet Connection	Ethernet: 1 x RJ45(10/100Mbps), Wi-Fi: 2.4G/5G Dual Band Wi-Fi
USD Interface	1 x USB2.0: Type C, Device 1 x USB3.0: Type A, Host
DC In	1 x DC 2.0
USB Operating System	Windows 7 (up to 1080P), Windows 8.1, Windows 10
Hardware Requirement	2.4GHz Intel® Core 2 Duo Processor or above, 2GB RAM or above
Colour System/Compression	H.264/YUY2/MJPG
USB Video Communication Protocol	UVC 2.0
Operating Temperature	0°C ~ 40°C
Storage Temperature	-20°C ~ 60°C
Humidity	10% ~ 90%RH

*All data are collected from the MAXHUB Lab

MAXHUB Education Smartboard



The Future Education Solution



20 Touch Points | 10ms Response Time



10 Writing Points | Unlimited Pages



Android 8.0 System



Eye Care Mode



Anti-Glare Glass | Mohs Level 7



4K UHD Clear Display



HDMI Out



Easy Wireless Connection



Optional PC Module



Shared USB Ports



Combining all your conventional classroom equipment into one device

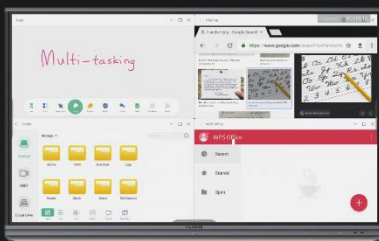
Replacing your classroom computer, whiteboard, projector, speaker etc.



Designed for Engagement

EASINOTE 5 Education Software*

An innovative education whiteboard application purposefully designed for teachers to engage students with compelling content and classroom activities.



Customizing Interesting Lessons

With various tools and templates for teaching staff to customize class activities for the different subjects (English, Mathematics, Chemistry, Music etc.)



Leveraging on Existing Resources

Supports importing of multimedia files such as images, videos, PowerPoint presentations etc., empowering teaching staff to design creative and resourceful lesson contents.



Interactive Classroom for Effective Learning

Creates engaging classroom activities that encourage interactions between teaching staff and students. Active participation also makes learning more fun and effective.

*MAXHUB EasiNote5 is only available for Windows 10

SPECIFICATIONS

Model	L65FA	L75FA	L86FA
Size (Inch)	65	75	86
Dimension (mm)	1489 × 897 × 87	1709.7 × 1020.2 × 86.3	1957 × 1160 × 88
Display Area (mm)	1428.48 (H) × 803.52 (V)	1649.664 (H) × 927.936 (V)	1895.04 (H) × 1065.96 (V)
VESA (mm)	600 x 400	800 x 400	800 x 600
Net Weight (kg)	39.65	53.35	68.85
Gross Weight (kg)	53.60	69.75	96.75
Wall-hanging Screw	M8 × 25mm	M8 × 25mm	M8 × 25mm
Aspect Ratio	16:9	16:9	16:9
Pixel Pitch (mm)	0.372 x 0.372	0.4296 × 0.4296	0.4935 × 0.4935
Resolution	3840 (H) × 2160 (V)	3840 (H) × 2160 (V)	3840 (H) × 2160 (V)
Refreshing Frequency	60Hz	60Hz	60Hz
Display Colour	1.07B (10bit)	1.07B (10bit)	1.07B (10bit)
Contrast Ratio	1200:1	1200:1	1200:1
Viewing Angle	178° (H/V)	178° (H/V)	178° (H/V)
Colour Gamut	72%	72%	72%
Back Light Unit	DLED	DLED	DLED
Brightness with Glass (min/typ)	300cd/m ² 350cd/m ²	300cd/m ² 350cd/m ²	300cd/m ² 350cd/m ²
Lifetime	≥30000 Hours	≥30000 Hours	≥30000 Hours
Operating System	Android 8.0	Android 8.0	Android 8.0
CPU	A73×2 + A53×2	A73×2 + A53×2	A73×2 + A53×2
GPU	Mali-G51× 4	Mali-G51× 4	Mali-G51× 4
RAM	4GB	4GB	4GB
ROM	32GB	32GB	32GB
Compatible PC Module (Optional)	MT43A	MT43A	MT43A
Touch System	Infrared Recognition	Infrared Recognition	Infrared Recognition
System	Windows10/Windows8/Windows7/WindowsXP/Linux/Mac/Android/Chrome	Windows10/Windows8/Windows7/WindowsXP/Linux/Mac/Android/Chrome	Windows10/Windows8/Windows7/WindowsXP/Linux/Mac/Android/Chrome
Response Time (ms)	≤ 10	≤ 10	≤ 10
Accuracy	±1.5mm	±1.5mm	±1.5mm
Glass	Toughened Glass Mohs Level 7 Standard	Toughened Glass Mohs Level 7 Standard	Toughened Glass Mohs Level 7 Standard
Sound Channel	2.0	2.0	2.0
Output Power	2 × 12W	2 × 12W	2 × 12W
Power Requirements	100-240V ~ 50/60Hz 4.0A	100-240V ~ 50/60Hz 4.0A	100-240V ~ 50/60Hz 4.5A
Overall Power (Max)	400W	400W	450W
Standby Power (Max)	≤0.5W	≤0.5W	≤0.5W
Operation Temperature	0°C - 40°C	0°C - 40°C	0°C - 40°C
Operation Humidity	10% - 90% RH	10% - 90% RH	10% - 90% RH
Storage Temperature	-20°C - 60°C	-20°C - 60°C	-20°C - 60°C
Storage Humidity	10% - 90%RH	10% - 90%RH	10% - 90%RH
HDMI In/Out	3/1	3/1	3/1
USB 2.0/3.0	3/3	3/3	3/3
Audio In/Out	1/1	1/1	1/1
VGA In	1	1	1
SPDIF	1	1	1
RS232	1	1	1
RJ45 In	1	1	1
Remote Battery	2 x AAA	2 x AAA	2 x AAA

*All data are collected from the MAXHUB Lab



IMIN

DMTS Door Access

Key Features



Non-contact infrared thermal sensor
(with accuracy of $0.3^{\circ}\text{C} \leq 1\text{m}$ range)



LED & infrared fill light to ensure
accuracy under all lighting conditions



Real-time temperature reading
with clear colour indication



Biometric Technology (supports
facial and "Forced mask" recognition)



Bi-camera lenses (2M RGB + 2M Infrared)



Optical Light Sensor



In-built Doorbell System



Cloud Based Data Management
With Upgradable HR Functions*

*Comes with 1-year free HR Data Management



Easy & Versatile Installation

The DMTS Door Access System is suitable for use at a variety of places, for all purposes.



Wall Mount

(Offices & Workplaces, Commercial Buildings, Factories & Warehouses etc.)



Turnstile / Gantry

(Commercial Buildings, Theme Parks, Sports Hub, Museums, Galleries etc.)



Pole Stand / Customized Kiosk

(Shopping Malls, Supermarkets, Retail Shops, Events & Exhibitions, Schools & Institutions etc.)



Desktop

(Hotels, Dormitories, Receptions & Concierges, Restaurants etc.)



Ease to use



Cloud Synchronization



Apps Lock



Full-featured



Safe and Secure



Permission Restrictions



Diversified payments



Simple Management



Hardware Diagnose



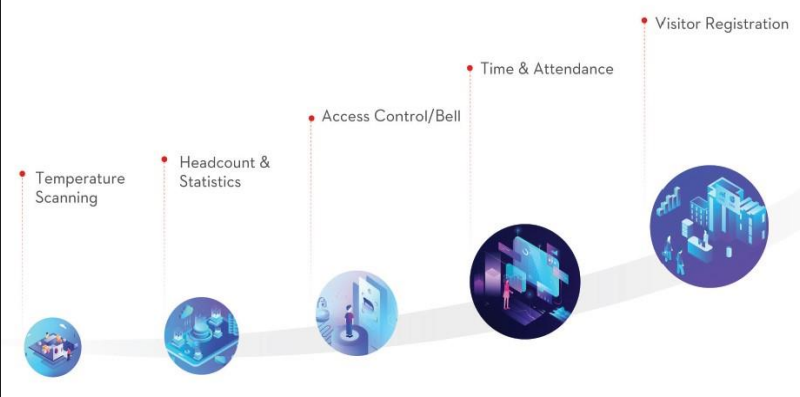
Online Assistance

Cloud Based Data Management

Management of device and analysis of data have been made easy via real-time cloud update. Worry no more about crashing apps or lack of data storage space.

Upgradable HR Functions

With embedded HR functions that are customizable and upgradable, the DMTS Door Access System is also your one-stop solution for a safe and efficient workplace.

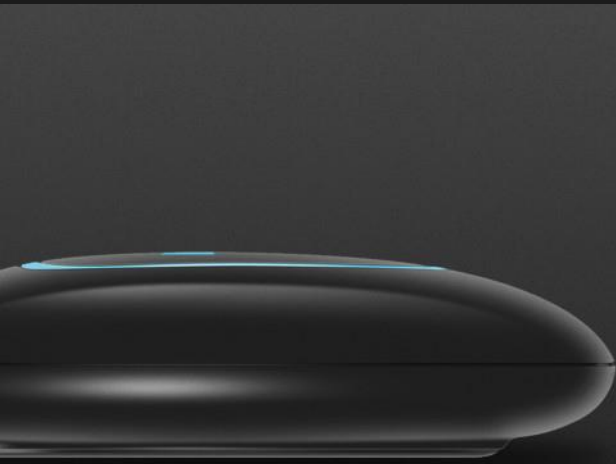


SPECIFICATIONS

Model	iMin R1	iMin R1 Pro	iMin R2
Dimension (mm) <i>(with temperature sensor)</i>	134.8 x 254.6 x 18.2 / 24.8 (Highest point)	134.8 x 252.8 x 18.2 / 24.8 (Highest point)	171 x 359 x 24
Screen	Multi-point Capacitive Touch Panel (5-point multi touch)	Multi-point Capacitive Touch Panel (5-point multi touch)	Multi-point Capacitive Touch Panel (5-point multi touch)
Camera	Binocular 2M RGB+ 2M Infrared Vertical: 40°, Horizontal: 65°	Binocular 2M RGB+ 2M Infrared Vertical: 40°, Horizontal: 65°	Binocular 2M RGB+ 2M Infrared Vertical: 40°, Horizontal: 65°
Non-Contact Temperature Sensor	MLX 90621 (Optional)	MLX 90621 (Optional)	MLX 90621 (Optional)
Detection Distance(mm)	300 - 800	300 - 800	300 - 800
Field Angle	60° x 16°	60° x 16°	60° x 16°
Speaker	1.5W Mono	1.5W Mono	1.5W Mono
Processor	HI3516DV300	Quad-core 1.8GHz	Quad Cortex-A53 1.8GHz
Operating System	Linux	Android 7.1	Android 7.1
RAM	1GB	2GB	4GB
ROM	8GB	16GB	16GB
Interface	USB Type A x1, Micro USB x1, DC 3.5mm, RJ45 x1, RS485 x1, RS232 x1, Relay (30Vdc 2A) x1, Wiegand (Bidirectional) x1	USB Type A x1, Micro USB x1, RJ45 x1, RS485 x1, RS232 x1, Relay (30Vdc 2A) x1, Wiegand (Bidirectional) x1	USB Type A x1, Micro USB x1, RJ45 x1, RS485 x1, RS232 x1, Relay (30Vdc 2A) x1, Wiegand (Bidirectional) x1
Bluetooth	4.2	4.2	4.2
Internet Connection	Ethernet: 100M, Wi-Fi: 802.11 b/g/n 2.4GHz	Ethernet: 100M, Wi-Fi: 802.11 b/g/n 2.4GHz	Ethernet: 100M, Wi-Fi: 802.11 b/g/n 2.4GHz
Input Power	100 – 240V	100 – 240V	100 – 240V
Output Power	12V 2A	12V 2A	12V 2A
Operation Temperature	-10°C - 50°C	-10°C - 50°C	-10°C - 50°C
Storage Temperature	-20°C - 65°C	-20°C - 65°C	-20°C - 65°C

*All data are collected from the MAXHUB Lab

Accessories



MAXHUB Wireless Screen-sharing Dongle

Eliminating Cable Limitations



Auto-run Driver

Compatible with USB2.0 or later, and Type A connector



Compatibility

Supports Windows7, macOS10.10 or later



One Click to Connect, Press to Switch

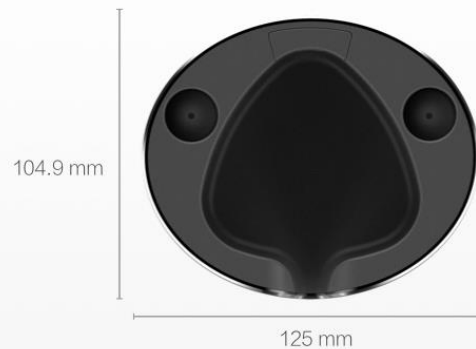
One-click only for wireless transmission. Long press to start split-screen mode, supporting up to 4 devices on one screen simultaneously.

MAXHUB Stylus Pen

Designed for Precise and Fluent Writing

Customizable Dual Color Writing* | Fine Pen Nibs | Adsorption Design
Wear-resistant Design | Smooth Strokes as Natural as Writing on Paper

*Dual-colour writing is available on the X3 Standard series only.



MAXHUB Dongle & Pen Holder

Safekeeping MAXHUB Accessories


Keeps up to 2 dongles and 2 pens
Exquisite design with classy metallic exterior
Durable ABS Plastic on the inside

MAXHUB Bluetooth Speakerphone

The High-Performance Speakerphone



 **Seamless Connection¹**
Connect via Bluetooth, USB cable or an Audio cable

 **Plug & Play**
Instantly operational after connecting device

 **Multiple Devices Connection**
Connect up to 3 devices simultaneously

 **8 Hours Durable Battery Life²**
Supports both wired cable & wireless charging³

 **High Performance Dynamic Speakers**
PZM structure with intelligent noise reduction & echo cancellation

 **360° Omnidirectional Voice Pick-up⁴**
6-element microphones with 5m pick-up radius⁵

1. For ideal results, MAXHUB recommends using MAXHUB USB cables and MAXHUB audio cables, which are boxed together with MAXHUB Speakerphone.

2. Based on tests results from MAXHUB Lab, the actual usage time depends on the environment, battery health and consumption.

3. Wireless charging is optional, and an extra wireless charging pad is required for this function.

4. To support 360° omnidirectional audio pickup, the MAXHUB Speakerphone needs to be unobstructed.

5. Based on tests results from MAXHUB Lab, test environment is within a meeting room with reverberation time less than 1s, voice being recognizable and identified as effective audio pick up.



MAXHUB Smart Lectern

Defining Your Stage



Captivating & Enthralling

With PC, microphone and touch screen functions integrated into a single exquisitely designed device, impress audiences with an enhanced organization image and present with confidence.

Power of Screen-sharing¹

Connects with mobile devices, laptops and synchronizes with onstage display screens² all wirelessly³. Supports simultaneous connections with up to 8 devices and instant switch⁴ between them.

Create Your Stage

Adjustable height that fits your stage and helps adapt to the different settings.

1. Supports screen-sharing from personal devices to the Smart Lectern, from the Smart Lectern to external display via HDMI or wireless connection. Relay screen-sharing from personal devices to external display with on-screen annotation features.
2. Supports Windows 7 and above, macOS 10.10 and above, iOS 9.0 and above, Android 5.0 and above. The "MAXHUB Share" application needs to be downloaded, installed, and granted necessary network access. Onstage display includes MAXHUB Integrated LED Panels, MAXHUB Interactive Smartboards, and displays that work with a MAXHUB Wireless Box or support HDMI input.
3. When connected to the same WLAN as the MAXHUB Integrated LED Panel, the Smart Lectern does not require any additional applications to achieve wireless screen-sharing. However, when connected to other display systems, additional applications to be installed on the Smart Lectern, or a MAXHUB Wireless Box may be required to achieve wireless connection.
4. A MAXHUB Smart Lectern supports simultaneous connection with up to 8 devices and instant switch amongst them,

SPECIFICATIONS

Model



MAXHUB Smart Lectern

Display	
Size (inch)	21.5
Screen Type	IPS
Resolution	1920 x 1080
Refresh Rate	60Hz
Colour Depth	8 bits (16.7M)
Touch System	
Touch Technology	P-CAP + EMR <i>(with finger or stylus)</i>
Capacitive Touch Points	10 Points
EMR Touch Points	1 Point
Stylus Touch Accuracy	0.5mm
Supported EMR Styli	SP08 Electro-magnetic Stylus/ 1024 Pressure Sensitivity
Operating System	
Version	Windows 10
CPU	Intel 8 th i5 8250U
RAM	8GB
ROM	SSD 128GB
Display Connectors	
HDMI Out	1
Audio Out	1
USB 2.0	2
AC In	1
DC In	1
Buttons	4 <i>(Power, Up, Down, Microphones Switch)</i>
Connectivity	
Wi-Fi Operating Frequency	2.4GHz/5GHz
Wireless Screen-Sharing Operating Frequency	2.4GHz/5GHz
Operating Distance	12m
Transmission Delay	< 133ms
Audio	
Speakers	2 x 3W
Gooseneck Microphones	2
Microphone Pick-up Distance	≤ 20cm
Microphone Sensitivity	-40dB ± 2dB
Microphone Input Frequency	40Hz~16kHz
Microphone Sample Rates	30kHz
Hardware	
Dimensions (mm)	739 x 400 x (1000~1200)
Net Weight (kg)	27
Working Temperature	0°C ~ 40°C
Working Humidity	10% ~ 90%
Storage Temperature	-20°C ~ 60°C
Storage Humidity	10% ~ 90%
Working Altitude	<5000m above sea level

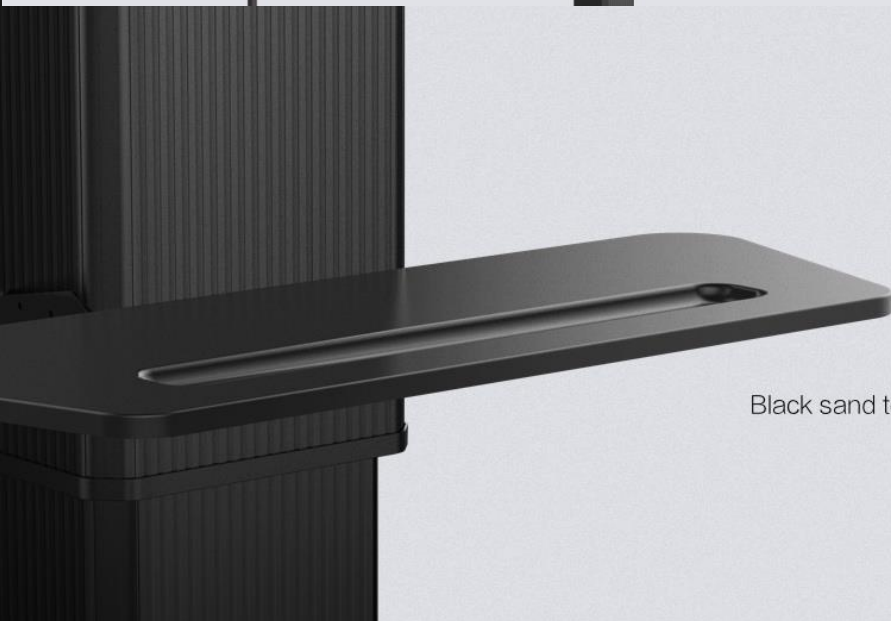
*All data are collected from the MAXHUB Lab

MAXHUB Electrical Stand

For the Best Visual Experience

Easy use and intelligent adjustment

One click on remote control changes the height of trolley*, providing you the best vision.



Exquisite appearance User-friendly design

Black sand texture scratch resistant material with a user-friendly tray, makes your workspace neat and tidy.

90-degree rotation, it becomes your workbench of creativity

With a remote control, 90-degree rotated MAXHUB Conference Flat Panel becomes your workbench of creativity. You can write, work, and discuss with co-workers on it just like a normal table, but with an even better experience.



Disclaimer:

By using or accessing this catalogue, you agree with the Disclaimer without any qualification or limitation.

The Company ("InTech Design") reserves the right to modify, alter, add, and remove any one or more of the items outlined in this catalogue. The Company shall be under no obligation to notify the user of such amendments to the products.

The products displayed in this catalogue are not the exhaustive display of the Company's full range of products. Kindly contact the Company for more information on the full range of products and services offered.

The colours of this catalogue have undergone printing process and may therefore vary from the original shades. They must be considered as purely indicative only.

The information on this catalogue are presented as general information only, and no representation or warranty is expressly or impliedly given as to the product accuracy, completeness, or correctness. The user must verify all the details and specifications, including but not limited to the product materials, specifications, user manual guides, services, terms of sales, payments and all other relevant terms independently with our sales/ marketing team prior to concluding any decision for purchasing or usage of our products.

The Company shall not be liable to the user for any damages, losses and causes of action, errors, whether direct, indirect, consequential or incidental, suffered or incurred by any person/s or due to any use and/or inability to use this catalogue or information, action taken or abstained through this catalogue. While enough care is taken by the Company to ensure that information in the catalogue are up to date, accurate and correct, the readers/ users are requested to make their independent enquiry before relying upon the same.

The catalogue is strictly private, confidential, and personal to its recipients and should not be copied, distributed or reproduced in whole or in part, nor passed to any third party.



INTECH DESIGN PTE LTD

21 Bukit Batok Crescent #18-80, Singapore 658065
Tel: (65) 6694 0818 / 6694 0876 | Fax: (65) 6694 0745
sales@intechsg.com
www.intechsg.com